



Keystone v2.0

Daptech Keystone is an enterprise planning software used to implement collaborative planning, budgeting and forecasting solutions, as well as analytical and reporting applications.

Changes in Version 2.0

Daptech Keystone's major new features include:

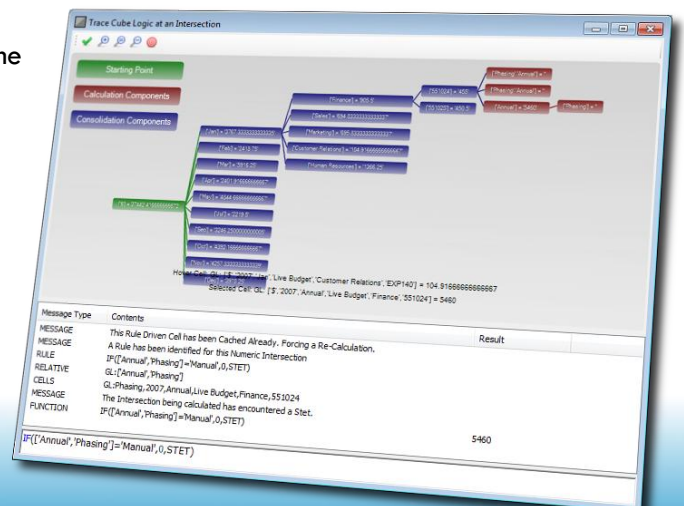
- A powerful Cube Pivot Engine built on Microsoft .net with Dimension Highlighting and Per Element Conditional Formatting
- Tab based window system for a cleaner desktop
- Server instance manager to aide in one-click Service Installation, archiving and configuration.
- Graphical Rule tracing with formula evaluation for every function called. Walk through your business logic!
- A built-in spreadsheet engine with full Microsoft Excel compatibility including VBA Support.
- One click 'live' copy to spreadsheet (Microsoft Excel not required)
- Reports are saved to the Server, not to a Mapped/Shared/Personal Hard Drive.
- Import and Export Microsoft Excel Spreadsheets
- Unique new security system, Users can belong to groups in two contexts: as a Contributor or as a Consumer.
 - Contributors can save reports and views to the Group Folder
 - Consumers can only read files from the Group Folder
- Views and Spreadsheets can be saved to the user's personal folder or to any of the groups the user belongs to as a Contributor.
- Security Front-end displays Users, Cubes and Dimensions per a group on a single screen.

	2007		2008		2009	
	Actual	Live Budget	Actual	Live Budget	Actual	Live
Personnel Costs	3,521,143.00	167,079.42	2,703,680.00	273,616.00	3,299,954.00	
Office Equipment and Costes	1,256,684.00	71,040.50	1,041,494.00	130,230.00	1,072,462.00	
Consulting and Services	981,448.00	56,841.33	793,029.00	107,070.00	897,969.00	
Printing and Consumables	602,027.00	37,442.42	460,208.00	61,003.00	586,364.00	
Vehicle Costs	561,891.00	42,735.83	517,685.00	63,691.00	524,339.00	
Acomodation Costs	602,216.00	44,755.50	541,482.00	70,852.00	609,439.00	
Travel Costs	695,456.00	0.00	511,898.00	0.00	576,749.00	
Entertainment & Donations	0.00	0.00	0.00	0.00	0.00	

Keystone Explorer Tour

Keystone Explorer is the new fully featured front-end to Keystone Server (32-bit and 64-bit). Featuring Spreadsheet Developer, Report Viewer, Cube and Dimension Explorers, Dimension Builder, Sample Gallery, Script editor (for ETL) and Business Logic Developer (for Cube Logic), Cube Cell Tracer:

Keystone Explorer is the complete package.



Cube Explorer

The new Pivot Engine unique to Keystone allows for Themes, Dimension Highlighting and conditional formatting unlike any other business intelligence software in the market today.

Account	2007		2008		2009	
	Actual	Live Budget	Actual	Live Budget	Actual	Live
Personnel Costs	3,521,143.00	167,079.42	2,703,080.00	273,616.00	3,299,954.00	
Office Equipment and Comms	1,258,684.00	71,040.50	1,041,494.00	130,230.00	1,072,462.00	
Consulting and Services	981,448.00	56,841.33	793,029.00	107,070.00	897,969.00	
Printing and Consumables	602,027.00	37,442.42	460,208.00	61,003.00	586,364.00	
Vehicle Costs	561,891.00	42,735.83	517,685.00	63,691.00	524,339.00	
Accommodation Costs	602,216.00	44,755.50	541,482.00	70,852.00	609,439.00	
Travel Costs	695,456.00	0.00	511,988.00	0.00	576,749.00	
Entertainment & Donations						

Account	2007		2008		2009	
	Actual	Live Budget	Actual	Live Budget	Actual	Live
Personnel Costs	3,521,143.00	167,079.42	2,703,080.00	273,616.00	3,299,954.00	
Office Equipment and Comms	1,258,684.00	71,040.50	1,041,494.00	130,230.00	1,072,462.00	
Consulting and Services	981,448.00	56,841.33	793,029.00	107,070.00	897,969.00	
Printing and Consumables	602,027.00	37,442.42	460,208.00	61,003.00	586,364.00	
Vehicle Costs	561,891.00	42,735.83	517,685.00	63,691.00	524,339.00	
Accommodation Costs	602,216.00	44,755.50	541,482.00	70,852.00	609,439.00	
Travel Costs	695,456.00	0.00	511,988.00	0.00	576,749.00	
Entertainment & Donations						

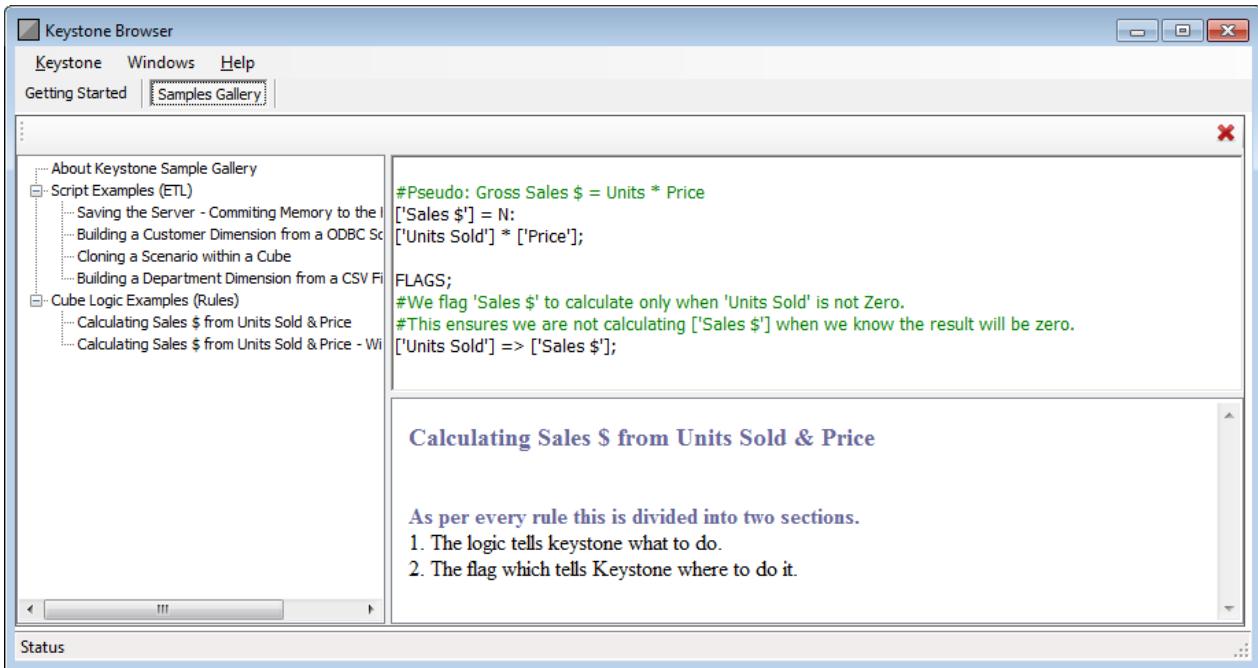
With all the stock standard features like Separate Row & Column Suppression, Save and Load View and Live Copy or Snapshot to Spreadsheet we are certain you will be able to interrogate your data in the most efficient manner possible.

Department	Measures General Ledger	2010 Jan	2010 Feb	2010 Mar	2010 Apr	2010 May
		110 - Dynarub 100g	\$	288.93	230.30	395.57
	% Change from Last Month	-44.44%	-20.29%	71.77%	-41.78%	174.83%
120 - Dynarub 250g	\$	250.00	240.00	280.00	300.00	35
	% Change from Last Month	-100.00%	-4.00%	16.67%	7.14%	16.67%
130 - Dynarub Extra 350g	\$	200.00	235.00	325.00	335.00	50
	% Change from Last Month	-100.00%	17.50%	38.30%	3.08%	49.25%
140 - Dynarub Ultra 100g	\$	3,200.00	3,523.00	3,524.00	3,520.00	3,52
	% Change from Last Month		10.09%	0.03%	-0.11%	0.09%
150 - Dynarub Ultra 250g	\$	400.00	500.00	510.00	600.00	70
	% Change from Last Month	-100.00%	25.00%	2.00%	17.65%	16.67%
160 - Dynarub Green	\$	708.57	1,217.86	1,240.00	1,262.14	1,28
	% Change from Last Month		71.88%	1.82%	1.79%	1.75%
210 - FreshMate 100g	\$	400.00	410.00	400.00	410.00	29
	% Change from Last Month	-100.00%	2.50%	-2.44%	2.50%	-29.27%
220 - FreshMate 250g	\$	500.00	501.00	502.00	503.00	50
	% Change from Last Month					

Example: 'Per-Element' Conditional Formatting.

Sample Gallery

Demonstrating the basic ETL and Rule functionality the Sample Gallery is a great starting point for new developers or to retrieve the basic code template for a particular task. We will continue to expand the gallery with each new version of Keystone.

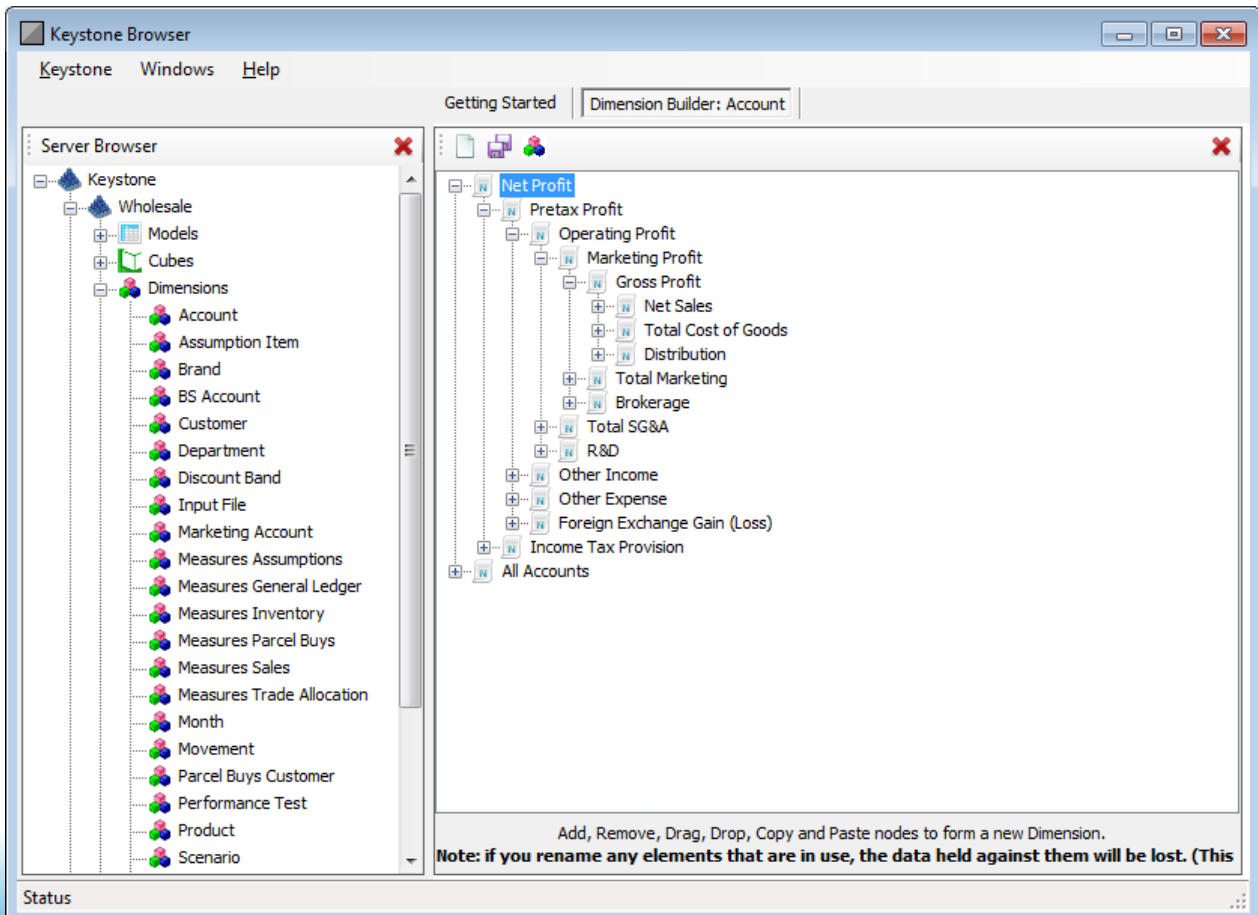


*The above screenshot is from a developer candidate build – this may differ from the final v2.0 release.

Dimension Builder

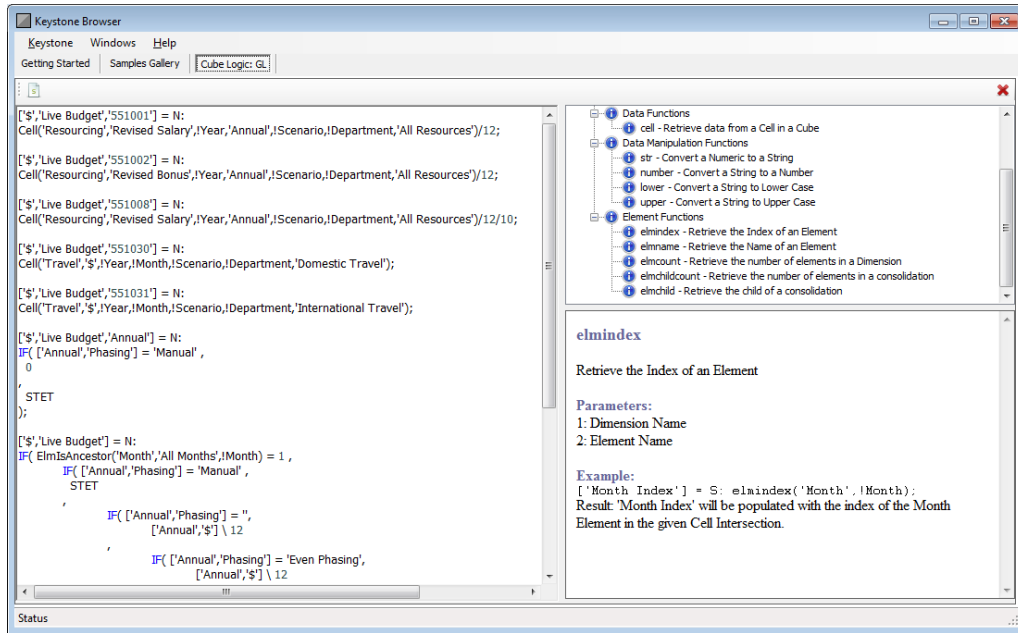
Get started in just minutes by using the built in Dimension Builder. No Scripting Required.

The dimension builder allows for saving dimensions from any server to any connected server.



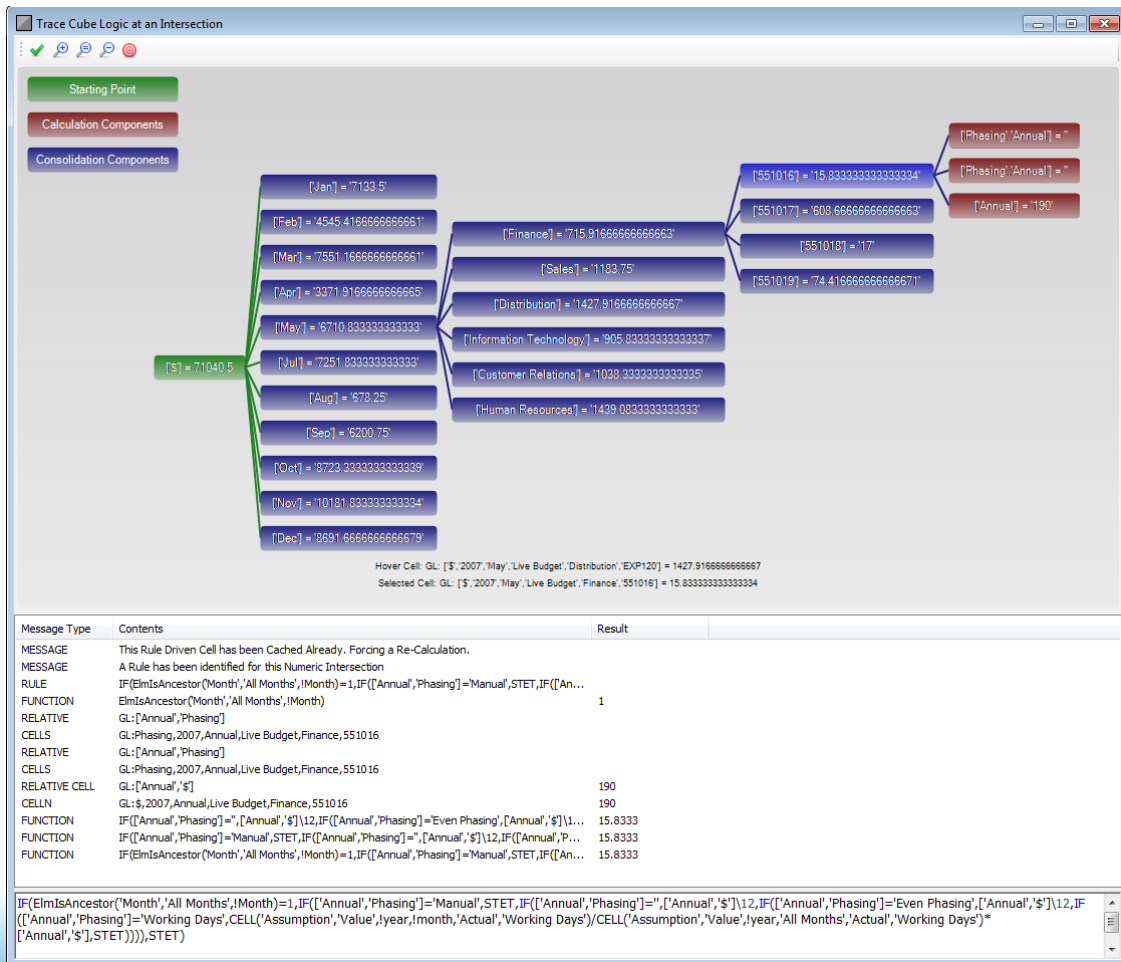
Cube Business Logic Editor

All scripting tools within Keystone have handy function reference panels on the right side of the screen. Advanced users can hide these.



Cube Business Logic Explorer

Within a cube, any cell can be explained by the Rule Tracer window. This shows a cell and either the elements that add up to that cell or the business logic. If the cell is logic driven then a breakdown of all evaluated sections of the code are displayed with the resulting values.



Script Editor – E.T.L Engine

Our focus within the E.T.L Engine was to provide more intuitive functions allowing the user to do more with less code. As a result we have produced the following new functions:

- Pushzeros – Clear out any portion of the cube in a single call.
- DimensionCopy – Copy a dimension with Aliases in-tact
- Pushdata – Send data into a cube – derive the type of the data being sent.

The screenshot shows the Keystone Browser Script Editor with a script for the `dimensioncopy` function. The script is as follows:

```

cubename = "GL"

srcScenario = "Live Budget"
destScenario = "Final Budget"

pushzeros(cubename,"$","","","","","")
view = extractcreate(cubename,"$","","","","","",srcScenario,"")

extractskipconsolidations(view,true)
extractskiprules(view,false)

while not extracteof(view) do          --Loop until end of query
    year = extractstring(view,2)
    month = extractstring(view,3)
    scen = extractstring(view,4)
    dept = extractstring(view,5)
    account = extractstring(view,6)

    value = extractdatanumeric(view)
    if value > 0 then
        pushdata(value,cubename,"$,",year,month,destScenario,dept,account)
    end
    extractnext(view)                  --Get the next row of results
end

clearcache(cubename)
    
```

The right-hand pane shows the `dimensioncopy` function details:

dimensioncopy

Creates a Duplicate Copy of an Existing Dimension. This copies the dimensions Attributes and Aliases also.

Parameters:

- 1: Source Dimension Name
- 2: Destination Dimension Name

Example:

```
dimensioncopy("Account", "Account Backup")
```

Cube Explorer to Spreadsheet Developer - the 'Live Copy'

The switch between a pivot engine and a report is made simple in an extreme. Just click the 'to spreadsheet' button below.

below.

Next time the spreadsheet is opened it will update with the latest information updated hourly/nightly or monthly.

The screenshot shows the transition from the Keystone Browser to the Spreadsheet Developer. The Keystone Browser window displays a data table with columns for 'Actual', 'Live Budget', and 'Actual' for the years 2007 and 2008. The 'to spreadsheet' button is highlighted. The Spreadsheet Developer window shows the same data in a spreadsheet format, with a formula bar and a 'Spreadsheet Function Reference' pane on the right.

	2007	2008
	Actual	Actual
Personnel Costs	3,521,143.00	2,703,080.00
Office Equipment and Comms	1,258,684.00	1,041,494.00
Consulting and Services	981,448.00	793,029.00
Printing and Consumables	602,027.00	460,208.00
Vehicle Costs	561,891.00	517,685.00
Accommodation Costs	602,216.00	541,482.00
Travel Costs	695,456.00	511,988.00
Entertainment & Donations	0.00	0.00

The Spreadsheet Developer window shows the following data in a spreadsheet format:

	2007	2007	2008	2008
	Actual	Live Budget	Actual	Live Budget
Personnel Costs	3521143	167079.4	2703080	273616
Office Equipment and Comms	1258684	71040.5	1041494	130230
Consulting and Services	981448	56841.33	793029	107070
Printing and Consumables	602027	37442.42	460208	61003
Vehicle Costs	561891	42735.83	517685	63691
Accommodation Costs	602216	44755.5	541482	70852
Travel Costs	695456	0	511988	0
Entertainment & Donations	601475	36090.08	611071	70871

The Spreadsheet Function Reference pane on the right shows the `custompicker` function details:

custompicker

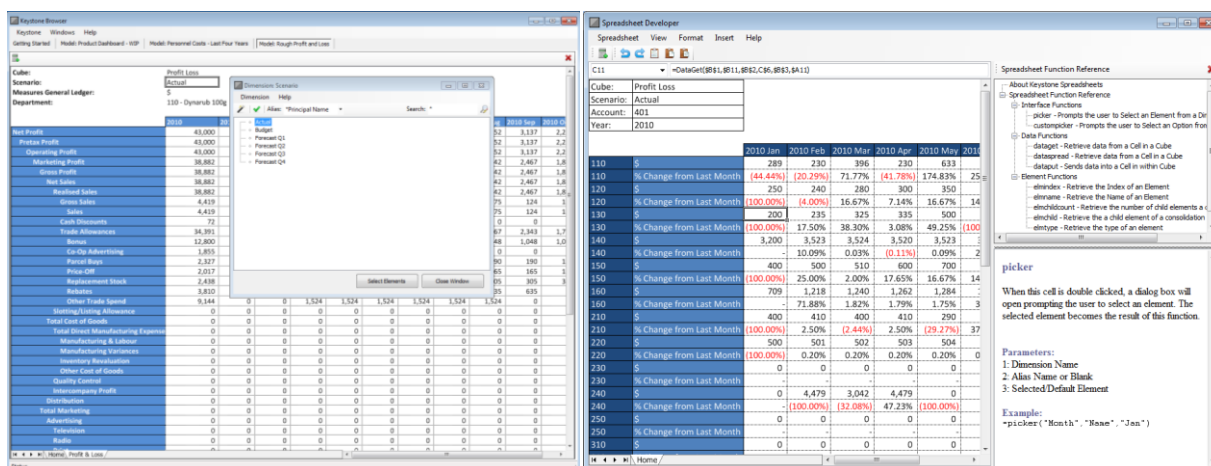
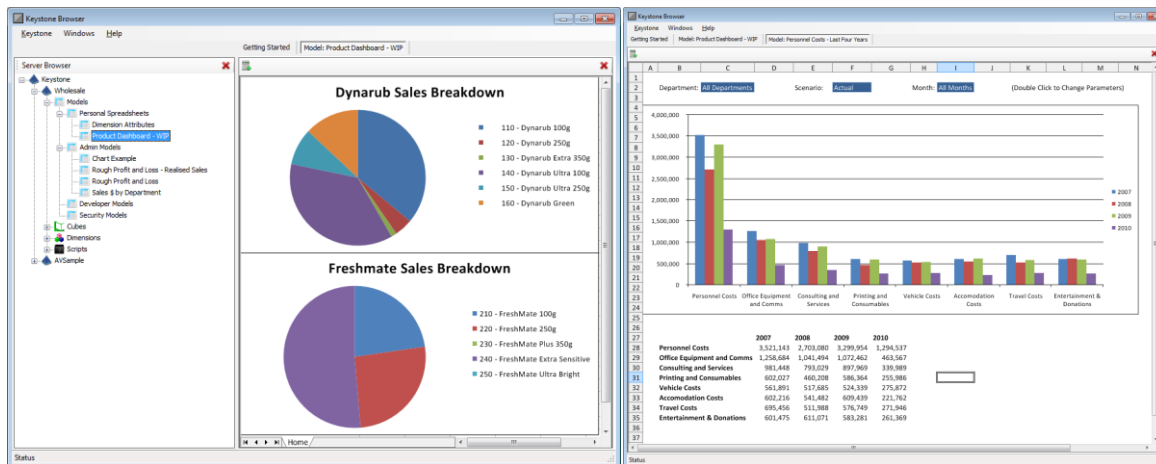
When this cell is double clicked, a dialog box will open prompting the user to select an Option from a List. The selected Option becomes the result of this function.

Parameters:

- 1: Selected/Default Option
- 2: A comma separated list of values which can be selected

User Built Reports

Most people can use spreadsheet software, especially when it's made to look and feel like Microsoft Excel. So it's no wonder users can create reports of what they want to see and publish them to their department's group or relevant parties.



System Requirements - Client

- .NET Framework 3.5 and above
- 1 gigahertz (GHz) or faster 32-bit (x86) or 64-bit (x64) processor
- Windows XP, Windows Vista, Windows 7

System Requirements - Server

- 2 gigabyte (GB) RAM (32-bit) or 4 GB RAM (64-bit)
- 1 gigahertz (GHz) or faster 32-bit (x86) or 64-bit (x64) processor
- Windows XP, Windows Vista, Windows 7, Windows Server 2003 or above

About Daptech Pty Ltd

Daptech Pty. Ltd. is a professional firm in North Sydney specialising in Business Intelligence and Enterprise Planning & Reporting software development with an advanced product offering and over 6 years of Industry Experience.

For more information on Daptech Keystone please contact us at INFO@DAPTECH.COM.AU / +61 2 8078 6921 or visit our website WWW.DAPTECH.COM.AU